

Skyrocketing insurance costs.

An aging baby boomer population.

Medicare and Medicaid's uncertain future.

Widespread patient dissatisfaction with the health care delivery system.

PRE-SYMPTOM MEDICINE* MAY BE THE CURE.

**Join us June 4 – 6 for the
First National Congress on**

Pre-Symptom MEDICINE

**Presented by Oakland University,
Early Warning™ Healthcare Institute,
St. Joseph Mercy Oakland and
Cardiology & Vascular Associates**

Program Objective

This three-day event brings together nationally recognized leaders in this emerging field of medicine to discuss the clinical, technological and social impact of pre-symptom medicine, emphasizing its effect on controlling heart disease and colon cancer. Learn why the diagnosis and treatment of disease years before the disease becomes symptomatic is essential to solving the nation's health care crisis.

WHO SHOULD ATTEND?

Physicians, Nurses and Members of the Allied Medical Fields

- Learn the clinical principles of pre-symptom medicine detection and treatment for heart disease and colon cancer.
- Learn how pre-symptom medicine can be implemented into daily clinical practice.

Business Leaders

- Learn how pre-symptom medicine can lower the cost of health care for your entire employee population by preventing costly symptomatic disease.

Labor Leaders

- Learn how pre-symptom medicine can provide better health care services to your members and prevent risky and invasive surgeries.

Government Leaders

- Learn how pre-symptom medicine can lower health care costs, provide greater benefits for Medicare and Medicaid populations and provide cost-feasible coverage for the uninsured.



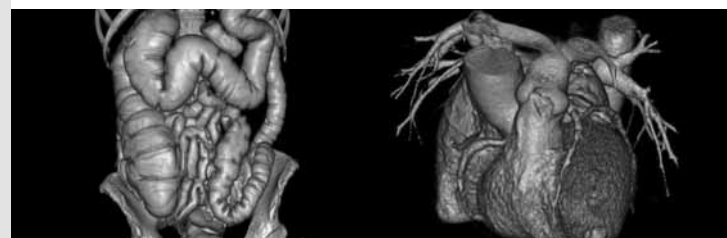
Continuing Medical Education

St. Joseph Mercy Oakland designates this educational activity for a maximum of or up to 13.5 credit hours in Category I credit towards the AMA Physician's Recognition Award. Each physician should claim only those hours of credit that he/she actually spent in the educational activity.

This activity has been planned and implemented in accordance with the Essential Areas and policies of the Michigan State Medical Society Committee on CME Accreditation through the joint sponsorship of St. Joseph Mercy Oakland. The St. Joseph Mercy Oakland is accredited by the Michigan State Medical Society Committee on CME Accreditation to provide continuing medical education for physicians.

This activity has been reviewed and is acceptable for up to 12.75 Prescribed credits by the American Academy of Family Physicians. When reporting CME credit hours, AAFP members should report total Prescribed and Elective hours earned for this activity. It is not necessary for members to label credit hours as evidence-based CME Prescribed or Elective for CME reporting purposes.

All events will take place on the campus of Oakland University in Rochester, Michigan.



* **Pre-symptom medicine is the diagnosis and treatment of disease, years before it becomes symptomatic.**



Discover the Emerging Field of Pre-Symptom Medicine

Statement of Need

The overwhelming majority of training for physicians, nurses and others in the medical field traditionally revolves around the diagnosis and treatment of symptomatic disease.

Rapid developments and breakthroughs in laboratory and radiological techniques have led to an increasing ability to detect disease years before symptoms are manifested. This evolution of painless and non-invasive early disease detection in seemingly healthy individuals requires an in-depth understanding of the profound implications for our entire health care system. As disease is diagnosed earlier and earlier, we must be prepared to fully embrace the transformation that is necessary to shift from invasive, risky and costly symptomatic disease detection and treatment to non-invasive, less risky and less expensive pre-symptom disease detection and treatment.

The National Congress on Pre-Symptom Medicine seeks to address the critical issues necessary in establishing the techniques of pre-symptom medicine into the routine health care delivery system. This will result in an overall healthier population and will have a dramatic and monumental impact toward lowering our health care costs. The cost savings will also simultaneously enable us to generate the financial resources necessary to provide pre-symptom health care to all currently uninsured populations.

Learning Objectives

1. Understand the clinical principles of pre-symptom medicine detection and treatment for heart disease utilizing coronary calcium scoring, virtual angiography, complex lipid sub-type testing and anti-plaque pharmaceuticals.
2. Understand the clinical principles of pre-symptom medicine in the detection and treatment of colon cancer utilizing DNA stool analysis, virtual colonoscopy and other imaging modalities.
3. Understand the implementation process for pre-symptom medicine into daily clinical practice.
4. Understand the effect of pre-symptom medicine on lowering health care costs by preventing costly symptomatic disease.

Faculty Disclosure Statement

All faculty participating in continuing education activities sponsored by St. Joseph Mercy Oakland are expected to disclose to the audience any real or apparent commercial financial affiliations related to the content of their presentations/materials.



Congress Supporters

General Electric Company
Toshiba America Medical Systems
Cardiology & Vascular Associates, PC

Amersham Health
AstraZeneca, LP
Borders Books
Blue Cross Blue Shield of Michigan
Comerica Bank
Farmbrook Radiology
GlaxoSmithKline
Grace & Wild, Inc.
Health Care Weekly Review
Merck
Ron Rose Productions
Schering-Plough Corporation
Smith Barney
Swarovski North America Limited

Media Sponsor:
“Dick Purtan and Purtan’s People”
Oldies 104.3 WOMC Detroit

Why Pre-Symptom Medicine?*

Health care expenditures in the United States reached \$1.3 trillion in 2000 and are expected to double by 2010.

The United States is the leader in health care spending (\$4,631 per person) **with every other industrialized country spending at least one-third less.** The United States, however, is ranked sixth in life expectancy among competing industrialized nations.

The greatest utilization of health care costs occurs after the age of 50. **As the baby boomer population (born between 1946 and 1962) ages, health care costs are expected to rise even more significantly.**

Health care benefits are a major cost concern in labor-intensive manufacturing such as the auto industry. **The auto industry spent \$7.2 billion on health care in 2000 and more than \$8.8 billion in 2002.** More than \$1,300 was spent per car on health care, making it the most expensive part of the automobile.

Heart disease is the number one killer of both men and women. One out of 25 women die of breast cancer, but one out of two women die of heart disease. **More than 60 percent of our health care costs are related to heart disease.** It is estimated that there will be more than 1.1 million new heart attacks this year resulting in 500,000 deaths (45 percent), with 250,000 of the fatalities occurring before any medical care could be administered. This does not include the numerous fatalities associated with previous heart attacks or chronic heart disease.

Technological advances in **Magnetic Resonance Imaging and Electron Beam Computerized Tomography can be used in pre-symptom medicine practice to diagnose heart disease up to 10 years before the risk of a heart attack.** Laboratory advances in complex lipid testing and other blood factor analyses enable clinicians to prescribe simple medications that are specific to an individual's plaque formation and are capable of reversing the process of heart disease. Pre-symptom diagnosis and treatment permits the majority of heart disease to be treated on an out-patient basis at a fraction of the cost associated with invasive therapies such as angioplasties and by-pass surgeries. The cost of a by-pass operation exceeds \$150,000 per patient and includes expenses such as cardiac rehabilitation, replacement worker time and lost productivity.

* Pre-symptom medicine is the diagnosis and treatment of disease, years before it becomes symptomatic.

Technological advances in **pre-symptom medicine** related to virtual imaging are also capable of significantly reducing the need for cardiac catheterization (angiography) and costly chest pain admissions. It is estimated that more than 60 percent of cardiac catheterizations result in negative findings and can be avoided by virtual angiography at one-tenth of the current cost. Likewise, **more than 60 percent of chest pain admissions can be avoided by the routine utilization of advanced imaging technologies.**

Colon cancer is the second leading cause of cancer deaths in the United States with 149,000 cases annually and 57,000 deaths. More than 90 percent of these deaths are preventable due to slow polyp growth, which typically takes five to seven years to become cancerous. **Most colon cancers can be prevented with routine colonoscopy, but only 10 percent of the at-risk population has a colonoscopy.** Fear of the procedure and its complications along with its high cost have limited the potential of colonoscopy to be used as an acceptable screening tool for colon cancer.

Technical breakthroughs in virtual colonoscopy and stool DNA analysis **have the potential of eliminating the incidence of colon cancer** through cost-effective screening by identifying individuals who need to undergo traditional colonoscopy and polypectomy for the removal of suspicious polyps. New generation (4-D) non-invasive virtual colonoscopy is not only capable of visually touring the entire bowel, but also can electronically analyze polyp findings to determine whether they are solid (suggestive of benign adenomas) or necrotic (suggestive of carcinomas). Screening can now be provided in an out-patient setting at a fraction of the cost of traditional methods without fear of the procedure or risk of complications.

The cost for detection and treatment of disease in the pre-symptom state is only a fraction of the cost associated with the detection and treatment of symptomatic disease. The significant cost savings with pre-symptom medicine can be utilized to provide coverage for the growing population of uninsured individuals and to fill the gaps of health care coverage in Medicare and Medicaid programs.

Projected health care expenditures can be cut in half within 10 years through the routine utilization of pre-symptom medicine – causing a dramatic shift in the delivery of health care from the high-risk and high-cost hospital setting to the non-invasive, low-risk, low-cost outpatient clinical practice.



Featured Speakers

Keynote Speakers

Arthur S. Agatston MD, FACC

Associate Professor of Medicine
University of Miami School of Medicine
Miami, Florida
Author, "The South Beach Diet"

Roger S. Newton PhD

President and CEO
Esperion Therapeutics, Inc.
Ann Arbor, Michigan

Mary Elizabeth Roth MD, FACPE

Vice President of Medical Affairs
Sacred Heart Hospital
Allentown, Pennsylvania

H. Robert Superko MD, FACC, FAHA

Director, Cholesterol, Genetics & Heart Disease Institute
Director of Research
Berkeley HeartLab, Inc.
Burlingame, California
Author, "Before the Heart Attacks"

Barry M. Berger MD, FCAP

Vice President of Laboratory Medicine
Exact Sciences Corporation
Marlborough, Massachusetts

John H. Bond MD

Professor of Medicine
Gastroenterology Section
University of Minnesota
Veterans Administration Medical Center
Minneapolis, Minnesota

Donald G. Bronn MD, PhD, FACRO

Congress Chair
Clinical Associate Professor
Wayne State University School of Medicine
Medical Director and Chairman
Early Warning Healthcare Institute
Auburn Hills, Michigan

Matthew J. Budoff MD, FACC

Assistant Professor of Medicine, UCLA
Program Director, Division of Cardiology
Harbor-UCLA Medical Center
Torrance, California

James Ehrlich MD

Medical Director
Colorado Heart and Body Imaging
Medical Co-Director
HeartScan of Indiana and HeartCheck
Washington, D.C.

Harvey S. Hecht MD, FACC

Director of the Center for Preventive Cardiology
Beth Israel Medical Center and Continuum Heart Institute
New York, New York

Congressman Joe Knollenberg

Ninth U.S. Congressional District – Michigan

Eduard V. Kotlyarov MD, PhD, FACNM

Clinical Professor of Radiology
Georgetown University and Michigan State University
President of the American College of Nuclear Medicine
Chairman of Nuclear Medicine
POH Medical Center
Pontiac, Michigan

Mitsue Miyazaki PhD

International Clinical Scientist
Clinical & MR Systems Engineering Group
Medical Systems Research and Development Center
Toshiba Medical Systems
Nasu, Japan

Perry J. Pickhardt MD

Associate Professor of Radiology
University of Wisconsin
Madison, Wisconsin

John A. Rumberger PhD, MD, FACC

Clinical Professor of Medicine
The Ohio State University
Medical Director, Physicians Prevention &
Wellness Center of Ohio
Columbus, Ohio

Stuart L. Trager MD

Medical Director, Atkins Nutritionals
Chairperson, Atkins Physicians Council
Attending Orthopedic Surgeon
Pennsylvania Hospital
Founder, Elite Health & Wellness
Philadelphia, Pennsylvania

Mark R. Wax MD

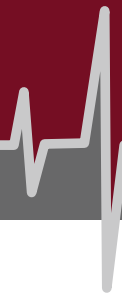
Chief, Computed Tomography
Good Samaritan Hospital Medical Center
West Islip, New York
Visiting Associate Professor
Department of Computer Science
State University of New York at Stony Brook
Long Island, New York

Panel Discussion Participant**Kirit C. Patel MD, FACC**

Chairman of Cardiology
Director of the Cardiac Catheterization Laboratory
St. Joseph Mercy Hospital-Oakland
Pontiac, Michigan

Scheduled speakers subject to change.

Discover the Emerging Field of Pre-Symptom Medicine



Do you know that a powerful anti-atherosclerotic substance identified in long-living Italian villagers has been isolated (ApoA-I Milano), reproduced and shown to rapidly reduce plaque in one single infusion?

Learn about the future of non-invasive plaque reduction from Roger Newton, PhD, president and CEO, Esperion Therapeutics, Inc. Pfizer acquired Esperion for \$1.3 billion based on the strength of Esperion's plaque-reducing drug, ETC216 as reported in JAMA. Previously, Dr. Newton led the research team that developed Lipitor®.

Do you know the clinical differences between low-fat and low-carb diets and how they affect the health of patients?

Resolve the confusion once and for all from the author of *The New York Times* number one best seller, "The South Beach Diet," cardiologist Arthur Agatston, MD, FACC.

Do you know that existing state-of-the-art technology can diagnose heart disease up to 10 years before the risk of a heart attack?

Do you know that non-invasive virtual angiography can eliminate the need for costly and risky cardiac catheterization in 50 to 60 percent of all cases?

Do you know that it's possible to rule out heart disease as a cause of chest pain in a matter of minutes and avoid costly and stressful chest pain admissions to the hospital?

Do you know that Electron Beam Calcium Scoring is five times more accurate than Framingham Guidelines for predicting heart attack risk?

Do you know that an Electron Beam Calcium Score above 100 is associated with a 10 times higher risk of having a heart attack?

Learn more from leading cardiologists in non-invasive coronary artery imaging (virtual angiography) and real-time coronary calcium detection, Matthew Budoff, MD, FACC, John Rumberger PhD, MD, FACC, and Harvey Hecht MD, FACC.

Do you know why 50 percent of all patients in coronary care units have "normal" cholesterol levels and 80 percent of those who suffer major heart attacks have the same cholesterol levels as those who do not have heart attacks?

Do you know that it is possible to individualize a diet, exercise and medication regimen to the specific cardiac risk of patients, eliminating the need for angioplasty or bypass surgery?

Do you know that it is possible to reverse up to 50 percent of coronary artery blockage with medication alone?

Do you know about the new lipid sub-typing blood tests that can predict the true risk of heart attacks?

Discover more from the nationally recognized leader in lipid analysis and head of the Berkeley HeartLab, Robert Superko, MD, FACC, FAHA, author of the revolutionary best seller "Before the Heart Attacks."

Do you know that heart disease is the number one killer of women and that one out of two women will die of heart disease whereas one out of 25 women will die of breast cancer?

Do you know how heart disease and metabolic syndrome combine to be the greatest survival risk for women?

Find out about the most common yet unknown risk that women face in their health and survival from Mary Elizabeth Roth, MD, FACPE.

Do you know that new advances in MRI technology can create coronary and vascular images without any contrast material?

Learn more from the inventor of breakthrough non-contrast imaging, Mitsue Miyazaki, PhD, from Nasu, Japan.

Do you know that prescreening with stool DNA analysis can identify individuals with a high-risk for colon cancer?

Barry Berger, MD, will discuss the future of DNA screening for the asymptomatic detection of disease.

Do you know the revolutionary changes in combination PET/CT imaging for the earliest detection and treatment of colon cancer?

Learn the details from the president of the American College of Nuclear Medicine, Eduard V. Kotlyarov, MD, PhD, FACNM.

Do you know that a virtual colonoscopy is able to identify more polyps than a traditional colonoscopy as revealed in a national study reported in the *New England Journal of Medicine*?

Learn the details of this breakthrough study and the revolutionary technology behind it from the study's author, Perry Pickhardt, MD. Discover more about the field of virtual colonoscopy from leaders Mark Wax, MD, John Bond, MD, and James Ehrlich, MD.

Do you know that pre-symptom medicine (the diagnosis and treatment of disease years before it becomes symptomatic) is essential to the survival of our health care system?

Learn from the experts how to apply the principles of pre-symptom medicine for heart disease and colon cancer in your practice by attending the First National Congress on Pre-Symptom Medicine.



Program Agenda

FRIDAY, JUNE 4, 2004 – Oakland Center

| | |
|------------------|--|
| Noon | Registration |
| 5:30 – 7 p.m. | Reception and Hors d'oeuvres |
| 7 – 7:30 p.m. | Welcoming Remarks Welcome to Oakland University – Gary Russi, Oakland University president Welcome to the Conference and Introduction of the Keynote Speaker – Donald Bronn, MD, PhD, FACRO |
| 7:30 – 8:30 p.m. | Keynote Speaker: The Evolution of New Medicines for the Rapid Reversal of Heart Disease – Roger Newton, PhD, president and CEO of Esperion Therapeutics Inc. |
| 8:30 – 8:45 p.m. | Q & A Session |

SATURDAY, JUNE 5, 2004

7 – 8 a.m. Registration, Continental Breakfast, Meet the Exhibitors – Oakland Center

PRE-SYMPTOM HEART DISEASE: PART I – Oakland Center

Session Co-Chairs: Donald G. Bronn, MD, PhD, FACRO
Kirit C. Patel, MD, FACC
Michele DeGregorio, MD

| | |
|--------------------|---|
| 8 – 8:15 a.m. | Welcoming Remarks – Gary Russi, Oakland University president |
| 8:15 – 9 a.m. | An Overview of Pre-Symptom Medicine – Donald Bronn, MD, PhD, FACRO |
| 9 – 9:45 a.m. | Prevention, Detection and Treatment of Early Stage Heart Disease – Harvey Hecht, MD, FACC |
| 9:45 – 10:30 a.m. | Clinical Evaluation of the Symptomatic Patient with Electron Beam Tomography – John A. Rumberger PhD, MD, FACC |
| 10:30 – 11:15 a.m. | Virtual Angiography and Calcium Scoring: New Methods in Non-Invasive Diagnosis of Coronary Artery Disease – Matthew J. Budoff MD, FACC |
| 11:30 p.m. – Noon | Meet the Exhibitors – Oakland Center |
| Noon – 1 p.m. | Lunch – Oakland Center |

The First National Congress on

Pre-Symptom **MEDICINE**

Presented by Oakland University, Early Warning™ Healthcare Institute,
St. Joseph Mercy Oakland and Cardiology & Vascular Associates



PRE-SYMPTOM HEART DISEASE: PART II – *Oakland Center*

Session Co-Chairs: Donald G. Bronn, MD, PhD, FACRO
Kirit C. Patel, MD, FACC
Michele DeGregorio, MD

- 1 – 2 p.m. **Keynote Speaker:** The Great American Health Risk for Women: Heart Disease – Mary Elizabeth Roth, MD, FACPE
- 2 – 2:45 p.m. New Breakthroughs in Cardiovascular MRI Technology – Mitsue Miyazaki, PhD
- 2:45 – 3:30 p.m. Understanding the Medical Literature on Low Carbohydrate Diets – Stuart L. Trager, MD
- 3:30 – 5 p.m. Reception/Meet the Exhibitors – Oakland Center
- 5 – 6:15 p.m. Dinner – Oakland Center

PROTECT YOUR HEALTH LECTURES – *Meadow Brook Theatre*

- 6:30 – 7 p.m. **Master of Ceremonies:** Dick Purtan, host “Dick Purtan and Purtan’s People” mornings on Oldies 104.3 WOMC Detroit
- Welcoming Remarks:** Congressional Initiatives for the Prevention of Disease – Congressman Joe Knollenberg
- Pre-Symptom Medicine Impact Award Presentation to Veronica Atkins
- 7 – 8 p.m. **Keynote Speaker:** Myths and Facts about Cholesterol by the author of “Before the Heart Attacks” – H. Robert Superko, MD, FACC, FAHA
- 8 – 9 p.m. **Keynote Speaker:** Myths and Facts about Diet and Weight Loss by the author of “The South Beach Diet” – Arthur Agatston, MD, FACC
- 9 p.m. Book Signing Session – Drs. Agatston and Superko

SUNDAY, JUNE 6, 2004

- 7 – 8 a.m. Registration, Continental Breakfast – Oakland Center

PRE-SYMPTOM APPROACHES TO COLON CANCER – *Oakland Center*

- 8 – 8:45 a.m. Virtual Colonoscopy: Bumps in the Path, but Light at the End of the Tunnel – James Ehrlich, MD
- 8:45 – 9:30 a.m. Current Clinical Approaches to Colon Cancer Detection with Virtual Colonoscopy – Mark Wax, MD
- 9:30 – 10:15 a.m. Virtual Colonoscopy and National Studies – Perry Pickhardt, MD
- 10:15 – 11 a.m. A Gastroenterologist’s View on Virtual Colonoscopy – John Bond, MD
- 11 – 11:45 a.m. Scientific Basis and Clinical Applications of Stool DNA Analysis for Colon Cancer Screening – Barry Berger, MD, FCAP
- 11:45 a.m. – 12:30 p.m. Combination PET/CT Imaging for the Earliest Detection and Treatment of Colon Cancer – Eduard Kotlyarov, MD, PhD, FACNM
- 12:30 – 12:45 p.m. Conference Summary and Closing Remarks – Donald Bronn, MD, PhD, FACRO, and Virinder Moudgil, Oakland University vice president for Academic Affairs and provost

Congress Supporters

Additional Congress Activities



Visit historic Meadow Brook Hall

Meadow Brook Hall is the former home of Oakland University's benefactors Matilda Dodge Wilson, widow of automobile pioneer John Dodge, and her second husband, Alfred G. Wilson, a Wisconsin lumber broker. The 100-room Tudor-revival style home was built between 1926 and 1929 and now serves as a museum and conference and cultural center.

Play golf on one of Oakland University's two championship courses

Oakland's Golf and Learning Center includes two 18-hole golf courses recognized among the top in Michigan. In its exclusive state-by-state rankings, *Golf Digest* ranked OU's R&S Sharf Golf Course 21st among Michigan's 855 golf courses. The course was designed by famed golf course architect and teacher Rick Smith. Katke-Cousins Golf Course has also been ranked as one of Michigan's top 25 and offers a magnificent view of Meadow Brook Hall and the Oakland University campus. The courses will be open for participants on Friday, June 4 and Sunday, June 6.

General Electric Company
Toshiba America Medical Systems
Cardiology & Vascular Associates, PC

Amersham Health
AstraZeneca, LP
Borders Books
Blue Cross Blue Shield of Michigan
Comerica Bank
Farmbrook Radiology
GlaxoSmithKline
Grace & Wild, Inc.

Health Care Weekly Review
Merck

Ron Rose Productions

Schering-Plough Corporation

Smith Barney

Swarovski North America Limited

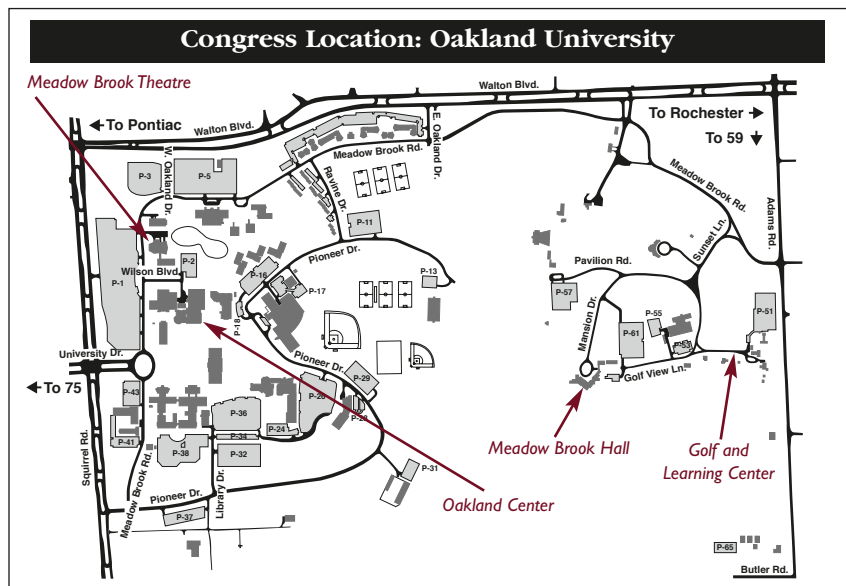
Media Sponsor:

"Dick Purtan and Purtan's People"
Oldies 104.3 WOMC Detroit

While at Oakland University...

- Attend an OU sporting event or visit the state-of-the-art Recreation Center right on the campus.
- Visit one of the many restaurants, shopping centers and other entertainment venues adjacent to campus.

For details and to learn more about area hotels and other attractions, please visit www3.oakland.edu/oakland/psml



First National Congress on Pre-Symptom Medicine

June 4 – 6, 2004 • Oakland University



Registration Form

All Congress participants will receive from Oakland University a Certificate of Recognition in the Principles of Pre-Symptom Medicine for Heart Disease and Colon Cancer.

Name (as you wish it to appear on your certificate): _____

Affiliation: _____ Title/Medical Specialization: _____

Address: _____

City: _____ State: _____ ZIP Code: _____

Phone number: _____ Fax number: _____ E-mail: _____

Emergency contact: _____

Congress Fees:

Early Registration (before April 12) _____ \$375

Advance Registration (before May 17) _____ \$425

Full Registration _____ \$475

Meals (included in registration fees):

____ Yes, I will attend the opening reception on Friday, June 4

____ Yes, please reserve lunch for Saturday, June 5

____ Yes, please reserve dinner for Saturday, June 5

Please indicate any **special dietary needs**: _____

Cancellation/Refund Policy:

- Cancellations must be received in writing.
- Cancellations will be assessed a \$50 administrative fee until May 21, 2004.
- Fifty percent (50%) of the registration fee will be refunded for cancellations received after May 21 through 28.
- Cancellations received after May 28, 2004, are not refundable.
- Please allow approximately four weeks after the congress for processing of refunds.

Additional Congress Activities:

Golf will be available for participants at both the Katke-Cousins and R&S Sharf golf courses, beginning at 8 a.m. on Friday, June 4 and at 1 p.m. on Sunday, June 6. Golf fee includes golf and cart.

____ Please reserve a round of golf at Katke-Cousins on Friday, June 4 @ \$65

____ Please reserve a round of golf at R&S Sharf on Friday, June 4 @ \$125

____ Please reserve a round of golf at Katke-Cousins on Sunday, June 6 @ \$65

____ Please reserve a round of golf at R&S Sharf on Sunday, June 6 @ \$125

Space is limited, so please register early. Advance payment must be received by May 17, 2004.

Will you be requesting CME credits for this Congress?

Yes No

Payment

Congress Registration Fee \$ _____

(includes meals and entrance to exhibits)

Total golf fees (if applicable) \$ _____

Total amount enclosed \$ _____

Please indicate method of payment:

____ Enclosed is a check or money order payable to Oakland University, in U.S. dollars

____ Credit card, please check one:

Card type: Visa MasterCard

Name on card: _____

Card number: _____

Exp. date: _____

Authorizing signature: _____

Please make check or money order payable to Oakland University and mail to:

National Congress on Pre-Symptom Medicine
Office of the President
Oakland University
204 Wilson Hall
Rochester, MI 48309-4401

Credit card registrations may be faxed to (248) 370-3504.

Questions? E-mail psm@oakland.edu or visit our Web site at <http://www3.oakland.edu/oakland/psm>

Confirmation: Congress registrants will receive e-mail or written confirmation of their enrollment.

All locations are handicap-accessible.

**Advance registration deadline is
May 17, 2004**



INTERNAL USE ONLY

Date Payment Rec'd _____ Amount Rec'd _____ Check # _____

Paid by: _____ Credit Card: _____ Visa _____ MasterCard _____



Office of the President

204 Wilson Hall
Rochester, MI 48309-4401

*Complaining won't give you
improved health care at lower cost.
Pre-symptom medicine will.*

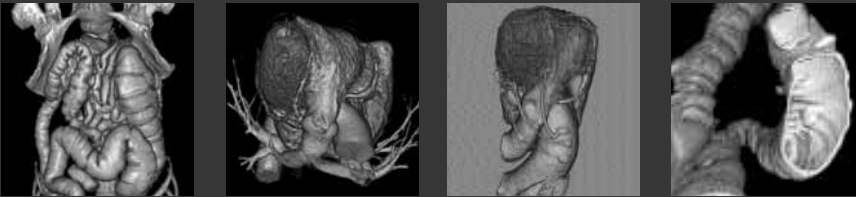
**Oakland University's
First National Congress on**

Pre-Symptom MEDICINE

June 4 – 6, 2004

Register now!

Presented by Oakland University, Early Warning™ Healthcare Institute,
St. Joseph Mercy Oakland and Cardiology & Vascular Associates



**PRE-SYMPTOM MEDICINE
MAY BE THE CURE.**

Pre-Symptom MEDICINE

The First National Congress on

